

STUDIO
11024

3 BEDROOM
3 BATH

1531 SQ. FT.

WE'RE A GREEN BUILDING!

ONE LEASE PER SUITE

JUNIPER

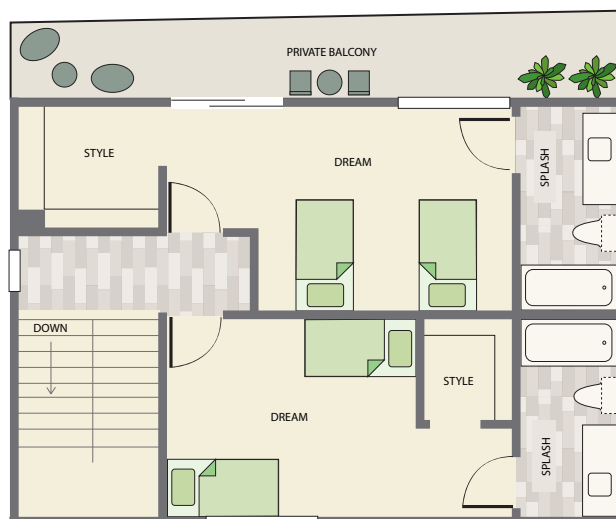
SHARE WITH
UP TO
SIX
FRIENDS

PRIVATE OR SHARED BEDROOMS AVAILABLE

1st floor



2nd floor



>>>> AMENITIES <<<<

- 160 sq. ft. fully-furnished private balcony
- Wall-mounted 40" high-definition TV
- Stainless steel kitchen appliances
- European-style cabinets with white quartz countertops
- Designer lighting
- Large kitchen pantry
- Eat-in island kitchen
- Large built-in desk off the kitchen
- Modern furniture package including sofa, accent chair, coffee table, side table, entertainment center,

- bar stools, desk chairs, and pillow-top twin or queen bed with storage chest under the bed
- Hardwood-style plank flooring
- Full-size washer/dryer
- Luxurious carpet in bedrooms
- Spacious walk-in closets in bedrooms
- Lighted wall mirrors in bathrooms
- Linen storage in bathrooms
- White quartz countertop in bathrooms
- GROHE polished chrome fixtures



Square footage and furniture subject to change.

11024 w. strathmore drive • los angeles, ca 90024
310.709.8220 • www.studio11024.com • info@studio11024.com