

STUDIO
11024

3 BEDROOM
3 BATH

1339 SQ. FT.

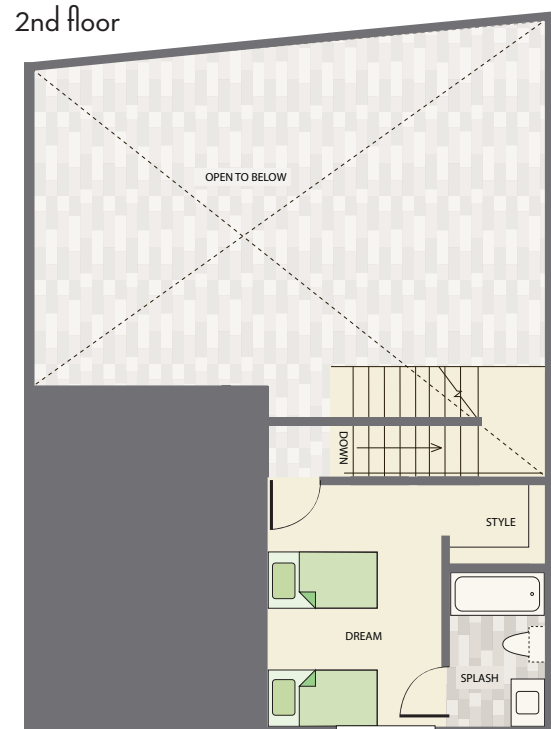
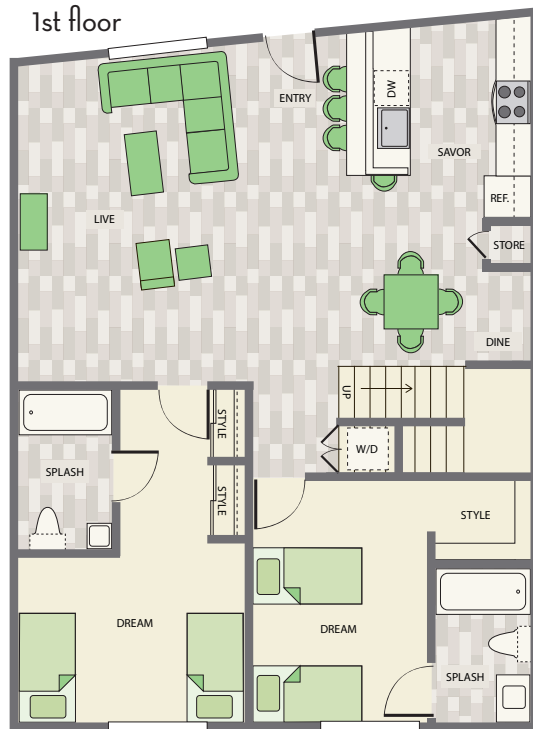
WE'RE A GREEN BUILDING!

ONE LEASE PER SUITE

EMERALD 2

SHARE WITH
UP TO
SIX
FRIENDS

PRIVATE OR SHARED BEDROOMS AVAILABLE



>>>> AMENITIES <<<<

- Wall-mounted 40" high-definition TV
- Stainless steel kitchen appliances
- European-style cabinets with white quartz countertops
- Designer lighting
- Large kitchen pantry
- Eat-in island kitchen
- Modern furniture package including sofa, accent chair, coffee table, side table, entertainment center, kitchen table with four chairs, bar stools,

- and pillow-top twin or queen bed with storage chest under the bed
- Hardwood-style plank flooring
- Full-size washer/dryer
- Luxurious carpet in bedrooms
- Spacious walk-in closets in two bedrooms
- Lighted wall mirrors in bathrooms
- Linen storage in bathrooms
- White quartz countertop in bathrooms
- GROHE polished chrome fixtures



Square footage and furniture subject to change.

11024 w. strathmore drive • los angeles, ca 90024
310.709.8220 • www.studio11024.com • info@studio11024.com