

STUDIO  
11024

2 BEDROOM  
2 BATH

879 SQ. FT.

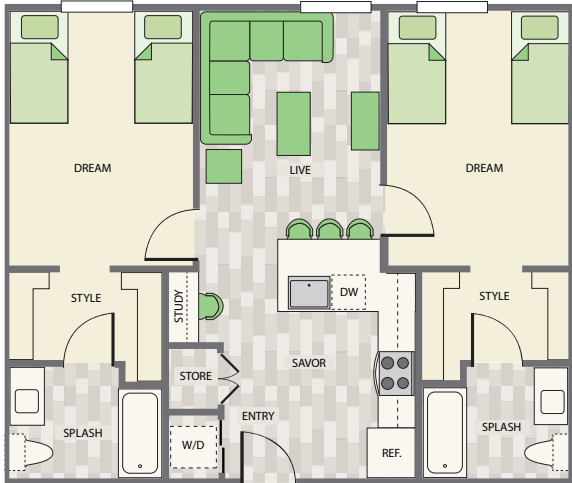
WE'RE A GREEN BUILDING!

ONE LEASE PER SUITE

» CLOVER «

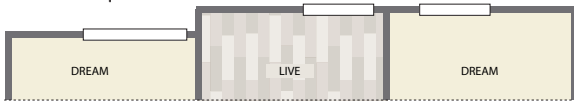
SHARE WITH  
UP TO  
FOUR  
FRIENDS

PRIVATE OR SHARED BEDROOMS AVAILABLE



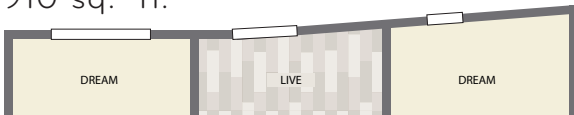
alt. 1

863 sq. ft.



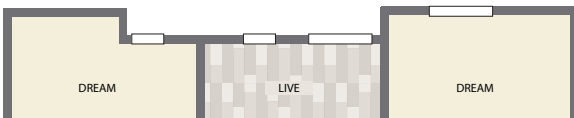
alt. 2

910 sq. ft.



alt. 3

892 sq. ft.



»»»» AMENITIES ««««

- Wall-mounted 40" high-definition TV
- Stainless steel kitchen appliances
- European-style cabinets with white quartz countertops
- Designer lighting
- Eat-in island kitchen
- Large kitchen pantry
- Built-in desk off kitchen
- Modern furniture package including sofa, coffee table, side table, entertainment center, bar stools, desk chair, and pillow-top twin or queen bed with storage chest under the bed
- Hardwood-style plank flooring
- Full-size washer/dryer
- Luxurious carpet in bedrooms
- Spacious walk-in closets bedrooms
- Lighted wall mirrors in bathrooms
- Linen storage in bathrooms
- White quartz countertop in bathrooms
- GROHE polished chrome fixtures



Square footage and furniture subject to change.

11024 w. strathmore drive • los angeles, ca 90024

310.709.8220 • www.studio11024.com • info@studio11024.com